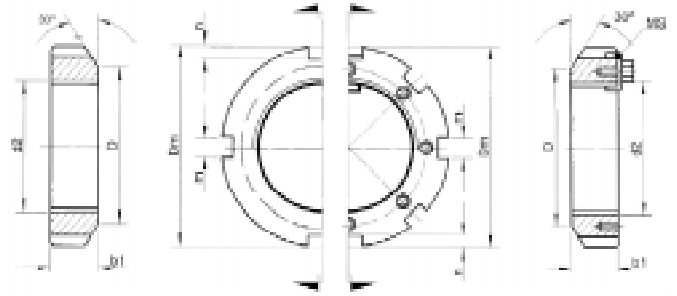




Porcas

Porcas



DESIGNAÇÃO	MEDIDAS (mm)						DISPOSITIVO DE SEGURANÇA
	d2	Dm	b1	D	m	n	
KM 0	M 10x0,75	18	4	13,5	3	2	MB 0
KM 1	M 12x1	22	4	17	3	2	MB 1
KM 2	M 15x1	25	5	21	4	2	MB 2
KM 3	M 17x1	28	5	24	4	2	MB 3
KM 4	M 20x1	32	6	26	4	2	MB 4
KM 5	M 25x1,6	38	7	32	5	2	MB 5
KM 6	M 30x1,5	45	7	38	5	2	MB 6
KM 7	M 35x1,5	52	8	44	5	2	MB 7
KM 8	M 40x1,5	58	9	50	6	2,5	MB 8
KM 9	M 45x1,5	65	10	56	6	2,5	MB 9
KM 10	M 50x1,5	70	11	61	6	2,5	MB 10
KM 11	M 55x2	75	11	67	7	3	MB 11
KM 12	M 60x2	80	11	73	7	3	MB 12
KM 13	M 65x2	85	12	79	7	3	MB 13
KM 14	M 70x2	92	12	85	8	3,5	MB 14
KM 15	M 75x2	98	13	90	8	3,5	MB 15
KM 16	M 80x2	105	15	95	8	3,5	MB 16
KM 17	M 85x2	110	16	102	8	3,5	MB 17
KM 18	M 90x2	120	16	108	10	4	MB 18
KM 19	M 95x2	125	17	113	10	4	MB 19
KM 20	M 100x2	130	18	120	10	4	MB 20
KM 21	M 105x2	140	18	126	12	5	MB 21
KM 22	M 110x2	145	19	133	12	5	MB 22
KM 23	M 115x2	150	19	137	12	5	MB 23
KM 24	M 120x2	155	20	138	12	5	MB 24
KML 24	M 120x2	145	20	135	12	5	MBL 24
KM 25	M 125x2	160	21	148	12	5	MB 25
KM 26	M 130x2	165	21	149	12	5	MB 26
KML 26	M 130x2	155	21	145	12	5	MBL 26
KM 27	M 135x2	175	22	160	14	6	MB 27
KM 28	M 140x2	180	22	160	14	6	MB 28
KML 28	M 140x2	165	22	155	12	5	MBL 28
KM 29	M 145x2	190	24	172	14	6	MB 29
KM 30	M 150x2	195	24	171	14	6	MB 30
KML 30	M 150x2	180	24	170	14	5	MBL 30
KM 31	M 155x3	200	25	182	16	7	MB 31
KM 32	M 160x3	210	25	182	16	7	MB 32
KML 32	M 160x3	190	25	180	14	5	MBL 32
KM 33	M 165x3	210	26	193	16	7	MB 33
KM 34	M 170x3	220	26	193	16	7	MB 34
KML 34	M 170x3	200	26	190	16	5	MBL 34
KM 36	M 180x3	230	27	203	18	8	MB 36
KML 36	M 180x3	210	27	200	16	5	MBL 36
HMLL 36	M 180x3	210	25	196	16	7	-
KM 38	M 190x3	240	28	214	18	8	MB 38
KML 38	M 190x3	220	28	210	16	5	MBL 38
HMLL 38	M 190x3	225	25	211	16	7	-
KM 40	M 200x3	250	29	226	18	8	MB 40
KML 40	M 200x3	240	29	222	18	8	MBL 40
HMLL 40	M 200x3	235	25	221	18	7	-
HML 41 T	TR 205x4	250	30	232	18	8	-
HM 42 T	TR 210x4	270	30	238	20	10	-
HMLL 42 T	TR 210x4	250	26	234	18	8	-
HML 43 T	TR 215x4	260	30	242	20	9	-

DESIGNAÇÃO	MEDIDAS (mm)						DISPOSITIVO DE SEGURANÇA
	d2	Dm	b1	D	m	n	
HM 3044	TR 220x4	260	30	242	20	9	MS 3044
HM 3144	TR 220x4	280	32	250	20	10	MS 3144
HM 44 T	TR 220x4	280	32	250	20	10	MB 44
HM 46 T	TR 230x4	290	34	260	20	10	-
HMLL 46 T	TR 230x4	270	26	254	18	8	-
HML 47 T	TR 235x4	280	30	262	20	9	-
HM 3048	TR 240x4	290	34	270	20	10	MS 3048
HM 3148	TR 240x4	300	34	270	20	10	MS 3148
HM 48 T	TR 240x4	300	34	270	20	10	MB 48
HM 50 T	TR 250x4	320	35	290	20	10	-
HMLL 50 T	TR 250x4	290	26	274	18	8	-
HM 3052	TR 260x4	310	34	290	20	10	MS 3052
HM 3152	TR 260x4	330	36	300	24	12	MS 3152
HM 52 T	TR 260x4	330	35	300	24	12	MB 52
HML 52 T	TR 260x4	310	30	290	20	10	-
HM 54 T	TR 270x4	340	36	310	24	12	-
HMLL 55 T	TR 275x4	320	27	304	18	8	-
HM 3056	TR 208x4	330	38	310	24	10	MS 3056
HM 3156	TR 280x4	350	38	320	24	12	MS 3156
HM 56 T	TR 280x4	350	36	320	24	12	MB 56
HML 56 T	TR 208x4	330	30	310	24	10	-
HM 58 T	TR 290x4	365	36	335	24	12	-
HMLL 59 T	TR 295x4	340	27	320	20	10	-
HM 3060	TR 300x4	360	42	336	24	12	MS 3060
HM 3160	TR 300x4	380	40	340	24	12	MS 3160
HM 60 T	TR 300x4	370	36	340	24	12	-
HML 60 T	TR 300x4	360	31	336	24	12	-
HM 62 T	TR 310x5	380	36	350	24	12	-
HMLL 63 T	TR 315x5	370	28	350	20	10	-
HM 3064	TR 320x5	380	42	356	24	12	MS 3064
HM 3164	TR 320x5	400	42	360	24	12	MS 3164
HM 64 T	TR 320x5	400	40	370	24	12	-
HML 64 T	TR 320x5	380	32	356	24	12	-
HM 66 T	TR 330x5	410	40	380	28	15	-
HMLL 67 T	TR 335x5	390	28	370	20	10	-
HM 3068	TR 340x5	400	45	376	24	12	MS 3068
HM 3168	TR 340x5	440	55	400	28	15	MS 3168
HM 68 T	TR 340x5	420	42	390	28	15	-
HML 69 T	TR 345x5	410	33	384	28	13	-
HM 70 T	TR 350x5	430	42	400	28	15	-
HMLL 71 T	TR 355x5	410	28	386	24	12	-
HM 3072	TR 360x5	420	45	394	28	13	MS 3072
HM 3172	TR 360x5	460	58	420	28	15	MS 3172
HM 72 T	TR 360x5	440	45	410	28	15	-
HML 72 T	TR 360x5	420	35	394	28	13	-
HML 73 T	TR 365x5	430	35	404	28	13	-
HM 74 T	TR 370x5	450	45	420	28	15	-
HMLL 75 T	TR 375x5	430	28	406	24	12	-
HM 3076	TR 380x5	450	48	422	28	14	MS 3076
HM 3176	TR 380x5	490	60	440	32	18	MS 3176
HM 76 T	TR 380x5	470	45	430	32	18	-

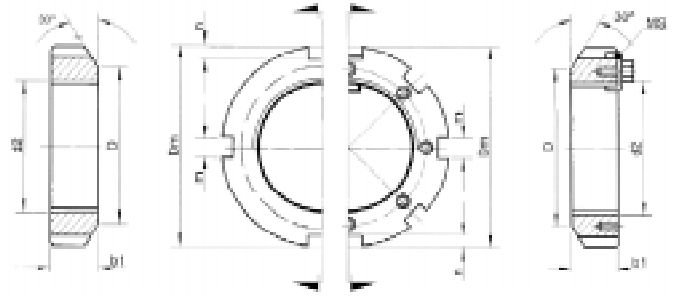


BERTOLOTO & GROTTA LTDA. - Buchas para Rolamentos
 Av. Major José Levy Sobrinho, 1296 • Cx. Postal 92 - CEP 13486-190
 Fone: (19) 3451.8210 • Fax (19) 3451.4770 • LIMEIRA • SP • Brasil
www.bertolotoegrotta.com.br e-mail: info@bertolotoegrotta.com.br





Porcas



DESIGNAÇÃO	MEDIDAS (mm)						DISPOSITIVO DE SEGURANÇA
	d2	Dm	b1	D	m	n	
HMLL 76 T	TR 380x5	445	36	417	28	14	-
HML 77 T	TR 385x5	450	37	422	28	14	-
HMLL 79 T	TR 395x5	460	30	436	24	12	-
HM 3080	TR 400x5	470	52	442	28	14	MS 3080
HM 3180	TR 400x5	520	62	460	32	18	MS 3180
HM 80 T	TR 400x5	500	46	460	32	18	-
HML 82 T	TR 410x5	480	39	452	32	14	-
HMLL 83 T	TR 415x5	480	30	456	24	12	-
HM 3084	TR 420x5	490	52	462	32	14	MS 3084
HM 3184	TR 420x5	540	70	490	32	18	MS 3184
HM 84 T	TR 420x5	520	49	480	32	18	-
HML 86 T	TR 430x5	500	41	472	32	14	-
HMLL 87 T	TR 435x5	500	30	474	28	13	-
HM 3088	TR 440x5	520	60	490	32	15	MS 3088
HM 3188	TR 440x5	560	70	510	36	20	MS 3188
HM 88 T	TR 440x5	540	51	500	36	20	-
HML 90 T	TR 450x5	520	41	490	32	15	-
HM 3092	TR 460x5	540	60	510	32	15	MS 3092

DESIGNAÇÃO	MEDIDAS (mm)						DISPOSITIVO DE SEGURANÇA
	d2	Dm	b1	D	m	n	
HM 3192	TR 460x5	580	75	540	36	20	MS 3192
HM 92 T	TR 460x5	550	53	510	36	20	-
HMLL 92 T	TR 460x5	530	33	504	28	13	-
HML 94 T	TR 470x5	540	43	510	32	15	-
HM 3096	TR 480x5	560	60	530	36	15	MS 3096
HM 3196	TR 480x5	620	75	560	36	20	MS 3196
HMLL 96 T	TR 480x5	550	33	522	32	14	-
HM 96 T	TR 480x5	590	56	540	36	20	-
HML 98 T	TR 490x5	570	45	540	36	15	-
HM 30/500	TR 500x5	580	68	550	36	15	MS 30/500
HM 31/500	TR 500x5	630	80	580	40	23	MS 31/500
HMLL 100 T	TR 500x5	575	37	547	32	14	-
HM 102 T	TR 510x6	620	58	570	40	23	-
HML 104 T	TR 520x5	600	47	570	36	15	-
HMLL 104 T	TR 520x6	595	42	565	32	15	-
HM 106 T	TR 530x6	640	60	590	40	23	-
HML 108 T	TR 540x6	620	49	590	40	20	-
HM 110 T	TR 550x6	670	63	620	40	23	-



BERTOLOTO & GROTTA LTDA. - Buchas para Rolamentos
 Av. Major José Levy Sobrinho, 1296 • Cx. Postal 92 - CEP 13486-190
 Fone: (19) 3451.8210 • Fax (19) 3451.4770 • LIMEIRA • SP • Brasil
www.bertolotoegrotta.com.br e-mail: info@bertolotoegrotta.com.br

